

Journal of Evolutionary Biology

VOLUME 22 ISSUE 9 SEPTEMBER 2009

- Research Papers**
- 1781 Evolutionary transitions among dioecy, androdioecy and hermaphroditism in limnadiid clam shrimp (Branchiopoda: Spinicaudata)
S. C. Weeks, E. G. Chapman, D. C. Rogers, D. M. Senyo and W. R. Hoeh
- 1800 How is sexual conflict over parental care resolved? A meta-analysis
F. Harrison, Z. Barta, I. Cuthill and T. Székely
- 1813 Condition dependence varies with mating success in male *Drosophila bunnamanda*
K. McGuigan
- 1826 Indirect effects of FRIGIDA: floral trait (co)variances are altered by seasonally variable abiotic factors associated with flowering time
M. T. Brock, J. R. Stinchcombe and C. Weinig
- 1839 Genetic divergence is more tightly related to call variation than landscape features in the Amazonian frogs *Physalaemus petersi* and *P. freibergi*
W. C. Funk, D. C. Cannatella and M. J. Ryan
- 1854 Ritual fights and male reproductive success in a human population
V. Llaurens, M. Raymond and C. Faurie
- 1860 The genetic and environmental basis of adaptive differences in shoaling behaviour among populations of Trinidadian guppies, *Poecilia reticulata*
M. Huizinga, C. K. Ghalambor and D. N. Reznick
- 1867 Heritability of resting metabolic rate in a wild population of blue tits
J.-Å. Nilsson, M. Åkesson and J. F. Nilsson
- 1875 How effective is recognition of siblings on the basis of genotype?
S. Paterson and J. L. Hurst
- 1882 Functional replacement of a primary metabolic pathway via multiple independent eukaryote-to-eukaryote gene transfers and selective retention
A. M. Nedelcu, A. J. C. Blakney and K. D. Logue
- 1895 Evolution of sexual size dimorphism in grouse and allies (Aves: Phasianidae) in relation to mating competition, fecundity demands and resource division
T. Lislevand, J. Figuerola and T. Székely
- 1906 The determinants of queen size in a socially polymorphic ant
J. Meunier and M. Chapuisat
- 1914 Rapid evolution of social learning
M. Franz and C. L. Nunn
- 1923 Phylogenetic and biological species diversity within the *Neurospora tetrasperma* complex
A. Menkis, E. Bastiaans, D. J. Jacobson and H. Johannesson
- 1937 Pollen competition as an asymmetric reproductive barrier between two closely related *Silene* species
J. Rahmé, A. Widmer and S. Karrenberg
- 1944 Heritability of and strong single gene (*Pgi*) effects on life-history traits in the Glanville fritillary butterfly
I. Klemme and I. Hanski
- Short Communications**
- 1954 Cell-mediated immunity and multi-locus heterozygosity in bluethroat nestlings
F. Fossey, A. Johnsen and J. T. Lifjeld
- 1961 Females benefit from multiple mating but not multiple mates in the burying beetle *Nicrophorus vespilloides*
C. M. House, C. A. Walling, C. E. Stamper and A. J. Moore
- 1967 Evolution towards self-compatibility when mates are limited
Y. Willi
- 1974 Corrigendum

 **WILEY-BLACKWELL**

This journal is available online at Wiley InterScience. Visit www3.interscience.wiley.com to search the articles and register for table of contents and e-mail alerts.

VOLUME 22 ISSUE 10 OCTOBER 2009

- Research Papers**
- 1975 Selection of low investment in sex in a cyclically parthenogenetic rotifer
M. J. Carmona, N. Dimas-Flores, E. M. García-Roger and M. Serra
- 1984 Comparative anatomy and phylogenetic distribution of the mammalian cecal appendix
H. F. Smith, R. E. Fisher, M. L. Everett, A. D. Thomas, R. R. Bollinger and W. Parker
- 2000 Complete lack of mitochondrial divergence between two species of NE Atlantic marine intertidal gastropods
P. Kemppainen, M. Panova, J. Hollander and K. Johannesson
- 2012 Relative fitness of females and hermaphrodites in a natural gynodioecious population of wild radish, *Raphanus sativus* L. (Brassicaceae): comparison based on molecular genotyping
K. Miyake, T. Miyake, T. Terachi and T. Yahara
- 2020 Extra-pair fertilizations contribute to selection on secondary male ornamentation in a socially monogamous passerine
T. Albrecht, M. Vinkler, J. Schmitzer, R. Poláková, P. Munclinger and J. Bryja
- 2031 Influence of genetic architecture on contemporary local evolution in the soapberry bug, *Jadera haematoloma*: artificial selection on beak length
H. Dingle, S. P. Carroll and T. R. Famula
- 2041 A genetic background with low mutational robustness is associated with increased adaptability to a novel host in an RNA virus
J. M. Cuevas, A. Moya and R. Sanjuán
- 2049 Evolution of host resistance and trade-offs between virulence and transmission potential in an obligately killing parasite
C. Bérénos, P. Schmid-Hempel and K. M. Wegner
- 2057 Body size as a primary determinant of ecomorphological diversification and the evolution of mimicry in the lampropeltine snakes (Serpentes: Colubridae)
R. Alexander Pyron and F. T. Burbrink
- 2068 Phylogeny and evolution of sexually selected tail ornamentation in widowbirds and bishops (*Euplectes* spp.)
M. Prager and S. Andersson
- 2077 Nestlings' carotenoid feather ornament affects parental allocation strategy and reduces maternal survival
M. Griggio, C. Morosinotto and A. Pilastro
- 2086 The maintenance of sex: host-parasite coevolution with density-dependent virulence
C. M. Lively
- 2094 Spatially heterogeneous stochasticity and the adaptive diversification of dormancy
E. Rajon, S. Venner and F. Menu
- 2104 Manifold aspects of specificity in a nematode–bacterium mutualism
É. Chapuis, V. Emelianoff, V. Paulmier, N. Le Brun, S. Pagès, M. Sicard and J.-B. Ferdy
- Short Communications**
- 2118 The efficiency of purifying selection in Mammals vs. *Drosophila* for metabolic genes
N. Petit and A. Barbadilla
- 2125 The effect of pathogens on selection against deleterious mutations in *Drosophila melanogaster*
J. A. Young, C. P. Yourth and A. F. Agrawal
- Cover photo:** A female of the rotifer *Brachionus plicatilis*, an increasingly used model organism in ecological and evolutionary studies. Both sexual and asexual reproduction are possible in these rotifers, the former resulting in dormant stages. By monitoring a natural population, short-term selection of low investment in sexual reproduction has been found (see Carmona *et al.*, pp. 1975–1983). Photo: Manuel Serra.

Information on this journal can be accessed at:
www.blackwellpublishing.com/jeb

Published for the European Society for Evolutionary Biology (ESEB) by Wiley-Blackwell

ISSN 1010-061X

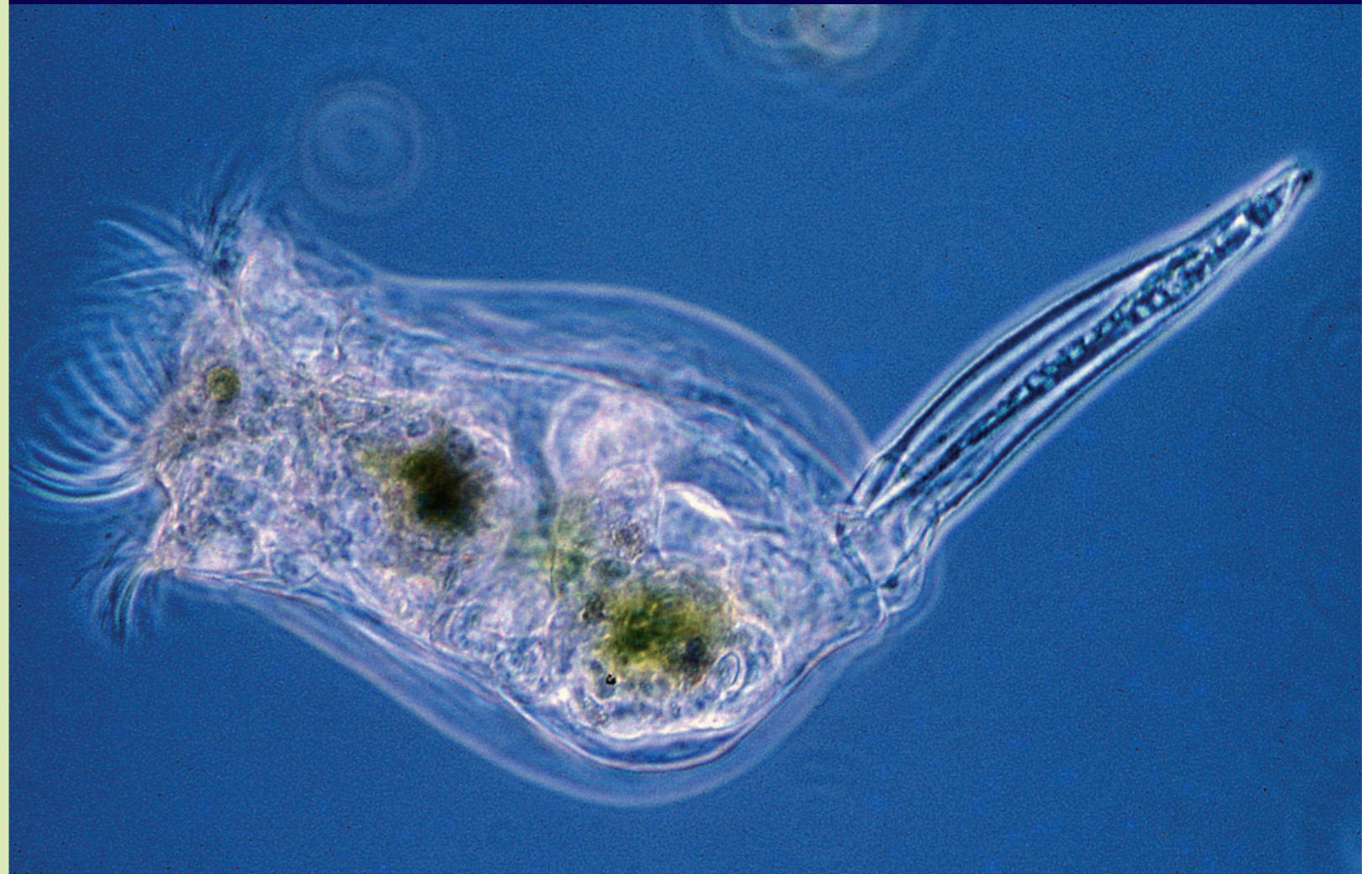
JOURNAL OF Evolutionary Biology

VOLUME 22 ISSUE 9 SEPTEMBER 2009

VOLUME 22 ISSUE 10 OCTOBER 2009

Journal of Evolutionary Biology
VOLUME 22 ISSUE 9 SEPTEMBER 2009
VOLUME 22 ISSUE 10 OCTOBER 2009
PAGES 1781-1974
PAGES 1975-2130

WILEY-BLACKWELL



 **WILEY-BLACKWELL**

 **eseb**
European Society for Evolutionary Biology